



1

Unique Traumas of Marital Rape
JUDGE AMY RONAYNE KRAUSE AND JUDGE MICHELLE RICK
MICHIGAN COURT OF APPEALS JUDGES

This slide features a dark purple gradient background with a teal title and white subtitle. A small teal rectangular tab is visible in the top right corner of the slide area.

1



2

Marital Rape
TRAUMA

This slide features a dark purple gradient background with teal and white text. A small teal rectangular tab is visible in the top right corner of the slide area.

2

Ike and Anna Mae got into an argument about finances. As the argument progressed, it became physical and Ike slapped Anna Mae and hit her twice with a fist. Ike then grabbed Anna Mae by her hair and pulled her down the hallway to their bedroom. Ike tells her to stay and walks out. The children witnessed the altercation.

3

Jeff approaches Tonya to drop off some of her things, despite a protection order being in place. Tonya told Jeff he should not be there, but Jeff came in anyway. Upon entry to the home, Jeff shoved Tonya and pulled out a gun while yelling. Jeff pointed the gun at Tonya and then turned it on himself. When Tonya tried to take the gun, Jeff shoved her again. Tonya tried to run off after the incident and at that point, Jeff discharged the gun in Tonya's direction and the bullet grazed her. Jeff put Tonya in the vehicle and they were later pulled over. Jeff told Tonya not to say anything to the cops, and the cops found nothing amiss.

4

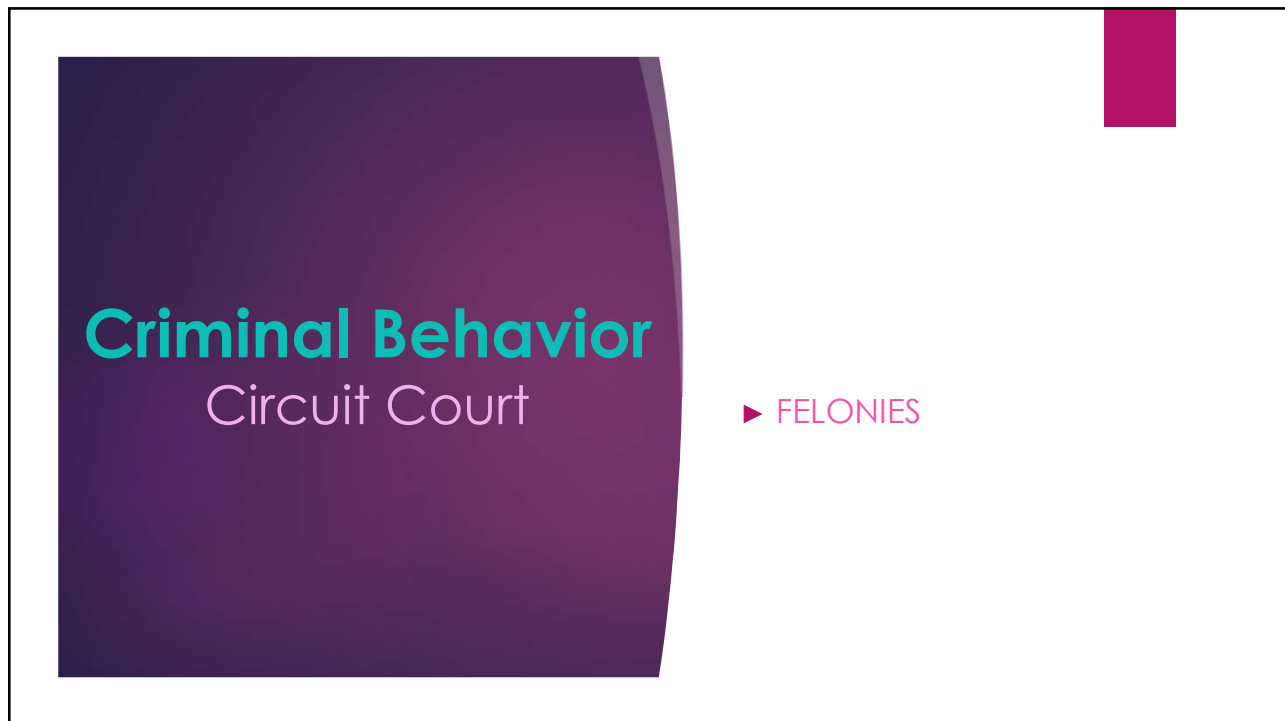


Criminal Behavior
District Court

- ▶ ARRAIGNMENT
- ▶ MISDEMEANORS
- ▶ FELONIES

A slide with a dark purple rounded rectangle on the left containing the text 'Criminal Behavior' in teal and 'District Court' in white. To the right, a list of three items is shown in pink: 'ARRAIGNMENT', 'MISDEMEANORS', and 'FELONIES'. A small pink vertical bar is in the top right corner.

5



Criminal Behavior
Circuit Court

- ▶ FELONIES

A slide with a dark purple rounded rectangle on the left containing the text 'Criminal Behavior' in teal and 'Circuit Court' in white. To the right, a single item is shown in pink: 'FELONIES'. A small pink vertical bar is in the top right corner.

6

Personal Protection Orders

- ▶ DOMESTIC
- ▶ NON-DOMESTIC
- ▶ SEXUAL ASSAULT

7

Personal Protection Orders

- ▶ IN WRITING
 - ▶ Particularized facts
 - ▶ Relief sought
 - ▶ Whether requested 'ex parte'
 - ▶ If any other action is pending between the parties
 - ▶ Signature (party or lawyer)

8




A slide with a dark purple gradient background. The text "Personal Protection Orders" is centered in a light blue font. Below it, "MICHIGAN LEGAL HELP" is centered in a white font and underlined. A small pink vertical bar is on the right side.

Personal Protection Orders

MICHIGAN LEGAL HELP

9



A slide with a dark purple gradient background on the left and a white background on the right. The text "Other Cases" is on the left in a light blue font. On the right, there is a list of three items, each preceded by a pink right-pointing triangle. A small pink vertical bar is on the right side.

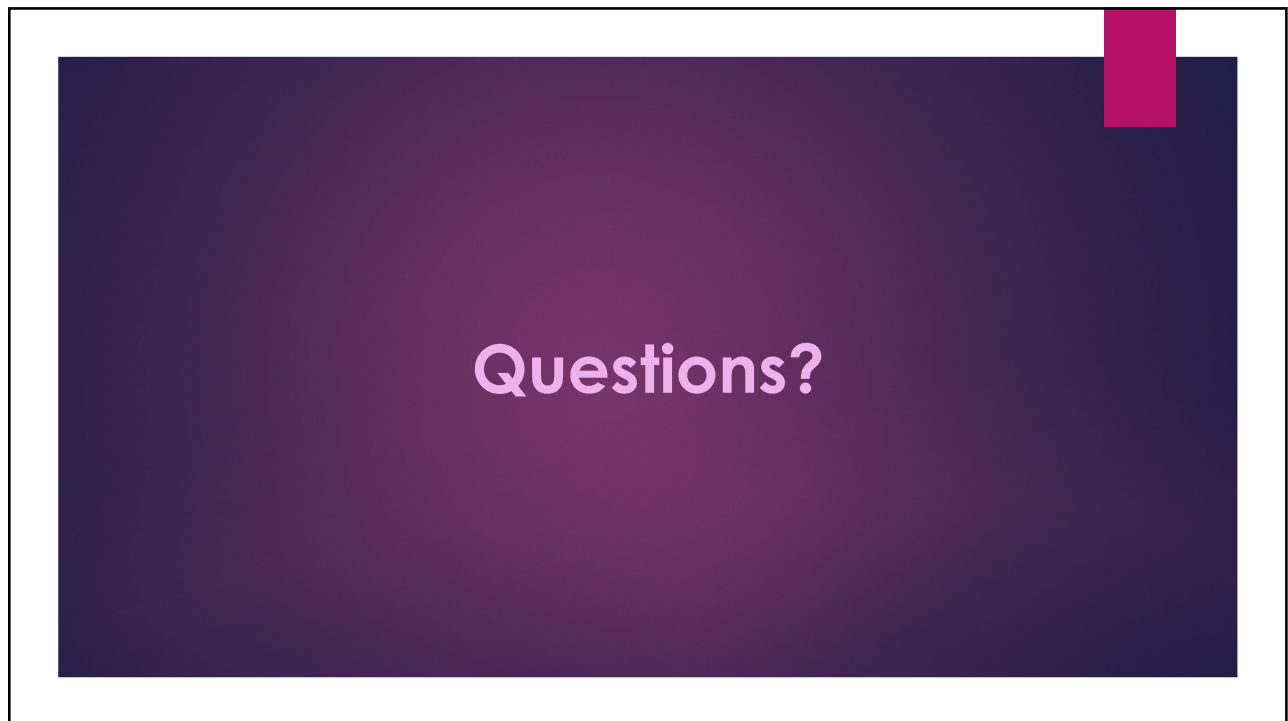
Other Cases

- ▶ DIVORCE
- ▶ CHILD CUSTODY/SUPPORT
- ▶ PATERNITY

10



11



12