




---

---

---

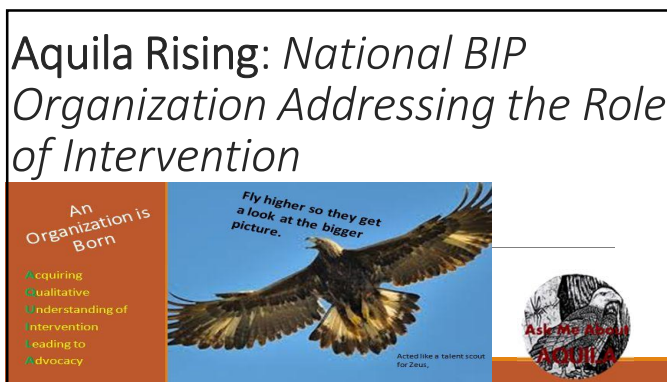
---

---

---

---

---




---

---

---

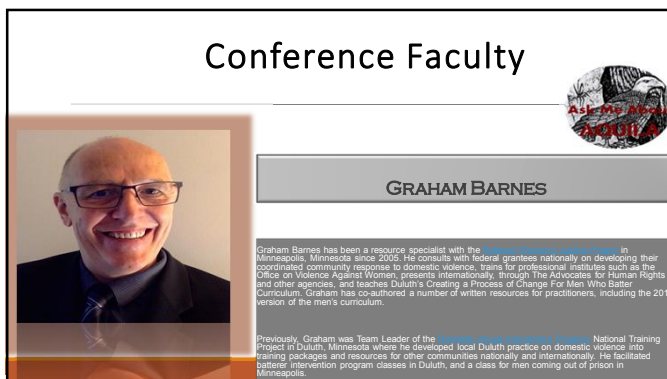
---

---

---

---

---




---

---

---

---


---


---

---

---

## Conference Faculty





JEFFRIE K. CAPE

Jeffrie K. Cape LMSW ACSW CAADC is the director of Charron Services LLC and started HEAL (Helping Explore Accountable Lifestyles) a 52 session Batterer intervention program and WEAVE (Women Exploring Accountably Violent Encounters) in Oakland County, Michigan.

Jeffrie has over 25 years of clinical experience and also has a private practice with varied clientele. She was appointed to the [Michigan Department of Corrections](#) by Governor Snyder in 2011. She helped develop local standards for batterer intervention programs and was a member of the governor's task force to develop state standards. She was active in the development and formation of BISC-MI in 1999. She serves on the board and was chair in 2001-2002. She was chair of [BISC-MI](#) (BIPSCO). She was one of the originators of [BISC-MI](#).

---

---

---


---

---

---

---

---



April 15, 2015

## AQUILA RISING

### National BIP Organization

### Addressing the Role of Intervention

---

---

---

---

---

---

---

---



AN IDEA

Let's define success by having a conference!

# BIG TENT



Let's Include Everyone!!

---

---

---

---

---

---

---

---

## November 2005

- Give Everyone a Voice
- Work with Top Researchers
- Craft Questions
- Meet
- Discuss
- Meet Some More
- Discuss Some More
- Collect Data

FROM  
ROOTS  
TO  
WINGS

---

---

---

---

---

---

---

---

## What We Learned

There was lots of interest  
Interest doesn't translate to follow through  
There was no absolute answer  
Compromise was going to be difficult

i can't tell you  
the key to success,  
but the key to failure is  
trying to please everyone.

*ed sheeran*

---

---

---

---

---

---

---

---

## Inadvertently Being Part of the Problem

Creating an impossible standard in an attempt to be accountable

NEVER  
EVER  
EVER

In Any Way Shape Or Form

**PROVE IT!**

---

---

---

---

---

---

---

---

September  
2008





**Shifting The Paradigm:**  
*Strategies For Addressing  
Batterers As Fathers*

---

---

---

---

---

---

---

---

A New Framework

**Product Lifecycle**

**An Industry Process**  
**Managing the entire lifecycle of a product**  
inception  
engineering design  
manufacture  
to service and disposal of manufactured products  
**Integrates**  
people  
data  
processes  
business systems  
**Provides**  
product information  
backbone for companies and their extended enterprise

---

---

---

---

---

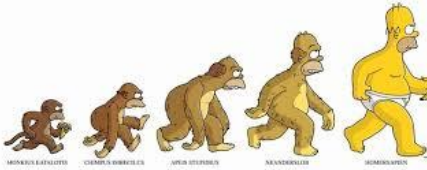
---

---

---

**What We Learned**

There was still a lot of interest  
Awareness of others working to define us  
We needed to define ourselves  
We needed a voice and an identity  
This would be an evolutionary process  
We needed more people



**HOMERSAPIEN**

---

---

---

---

---

---

---

---

An  
Organization is  
Born

Acquiring  
Qualitative  
Understanding of  
Intervention  
Leading to  
Advocacy

Fly higher so they get  
a look at the bigger  
picture.



Acted like a talent  
scout for Zeus,

---

---

---

---

---

---


---

Creating A  
Listserv

I know  
someone  
who...

196

Welcome  
to our  
Group!



---

---

---

---

---

---

---

2009

We need structure  
Start with Mission  
Statement  
What are our goals?



Designed by TeamMapItUSA.com

---

---

---

---

---

---

---

AND THEN

## The Economy Tanked




---

---

---

---

---

---

---

## Implications for AQUILA

People had less time to participate in non revenue producing activities  
No Time or Money to Meet Listserv became connection  
Others began to define what we do and how we do it  
Evidence Based Standard

# DISAPPEARED




---

---

---

---

---

---

---

## What's Happening Around the Country?

Backlash  
Lip Service or elimination of Community Coordination  
Legistators looking at cost effectiveness  
Easy Answers to Complex Issue




---

---

---

---

---

---

---



**FLORIDA**

Dismantled monitoring Program

Creating new oversight agency

Evidence based Practice



change

---

---

---

---

---

---

---

---



**Washington State**

Some Counties

Couples Counseling

Individual Treatment

Anger Management



**Batterer Intervention Programs**

---

---

---

---

---

---

---

---







lose

SPEND

not working

---

---

---

---

---

---

---

---



---

---

---

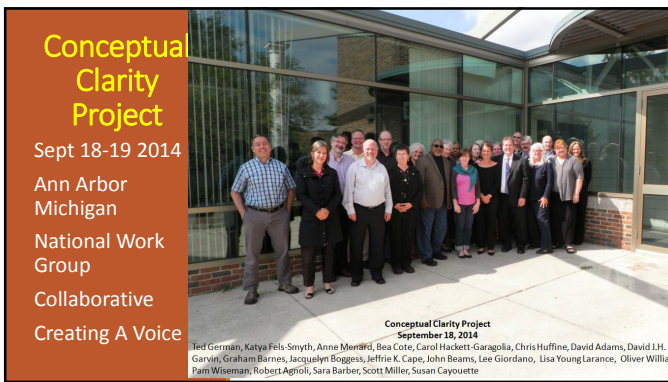
---

---

---

---

---



---

---

---

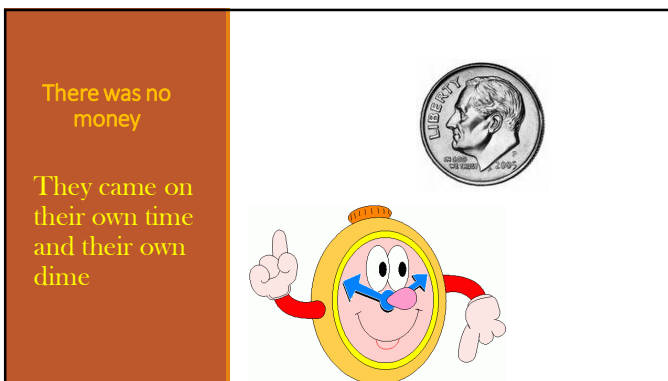
---

---

---

---

---



---

---

---

---

---

---

---

---



Conceptual  
Clarity Project  
Members

Who are  
with us  
today

SAY HI

Bea Cote	Chris Huffine
Chris Hall	Jeffrie Cape
Michael Paymar	Oliver Williams
Pam Wiseman	Rus Funk
Ulester Douglas	Susan Cayoutte
Graham Barnes	Robert Agnoli
Lisa Young Larance	Lore Rogers
Etiony Aldorondo	David Adams
David Garvin	Ted German

---

---

---

---

---

---

---

---

Everyone is an Expert about DV!

- People commonly blame victims - take no account of social and historical underpinnings of individual behavior
- People often don't consider the power imbalance between a couple, the complexity of how their lives are tied together through economics, family, ambivalence and social expectations
- When the criminal legal system gets involved, those who intervene often don't understand victim behavior

---

---

---

---

---

---

---

---

Offender Threats & Manipulation

Victims

Community & Agency Efforts

---

---

---

---

---

---

---

---

### NOW - Everyone's an Expert about Batterer Programs!

At one end of the scale:

- "Just get him into a men's program and everything will be OK"
- Unrealistic expectations of change based on programs -
- "Trust me babe - look I'm doing the program aren't I?"

28

---

---

---

---

---

---

---

---

"I'm sending him to individual therapy with John Random-Therapist in California!"

- No partner safety strategies with advocates
- Full offender confidentiality
- No info exchange with criminal justice system
- Focus on mental health issues, rather than power analysis
- It's 1970 again!

29

---

---

---

---

---

---

---

---

### NOW - Everyone's an Expert about Batterer Programs!

Availability Heuristic – A mental shortcut to make judgments about the probability of events by the ease with which examples come to mind

- Aquila aims to do better than these extremes!

30

---

---

---

---

---

---

---

---

### Aquila is a “Medium-sized Tent”

- Victim safety and well-being is more important than offender change
- Historical imbalances of power between men and women and different groups in society contribute to intimate partner violence
- Change needs to happen both at an individual level and structural level (there's no THEM - only US)
- BIPs are only as good as the systems that back them up –strong advocacy programs and systems provide a web of accountability to enable programs to do their work well
- Aquila has space for diverse programs and ideas that challenge us to share power, dialogue and learn from each other

31

---

---

---

---

---

---

---

---

### What We Can Do Locally

- Remind people: violence is intentional behavior
- We live in a victim-blaming society - everything we can do to STOP blaming victims for what offenders do will help tip the scales of justice
- Men who batter are also human beings so treat them with respect even though we are disgusted by violence
- Evidence-based practice needs defining. The medical world doesn't define complex social interventions well. The best interventions take account of victim's experience, different cultures, and requires careful relationships between practitioners and researchers. Much of the research on BIPs is poor quality

32

---

---

---

---

---

---

---

---

### What We Can Do Locally

- Respond to the most high-risk offenders using the information that is available right now – learn from new models for example High Point NC Domestic Violence Initiative
- Read research critically
- We can partner more effectively. Get to know our local LGBTQ agencies so we can help them identify and serve offenders

33

---

---

---

---

---

---

---

---

### Statistics And Research Aren't Sacred

Thought of as the definitive  
The magic answer  
Need to understand design  
Interpretations can vary

"ENOUGH RESEARCH WILL TEND TO SUPPORT YOUR CONCLUSIONS."

ARTHUR BLOCH

There are lies, damned lies and statistics.  
(Mark Twain)

135% of statistics are wrong

---

---

---

---

---

---

---

---

BASIC ASSUMPTIONS

### Gender Informed

#### VARYING STYLES

*Different Emphasis and Language*

**Gender is important in intervening with individuals who have been abusive to their partners**

Video  
GROUP DISCUSSION  
ACCOUNTABILITY  
Workbook  
Español  
Role Play

---

---

---

---

---

---

---

---

BASIC ASSUMPTIONS

### Organized Response Needed

#### Criticism

one size fits ALL

INTERVENTION

not working

Ineffective!!

---

---

---

---

---

---

---

---




---

---

---

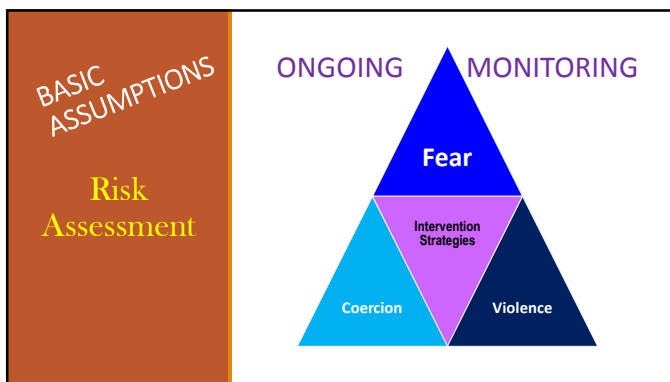
---

---

---

---

---




---

---

---

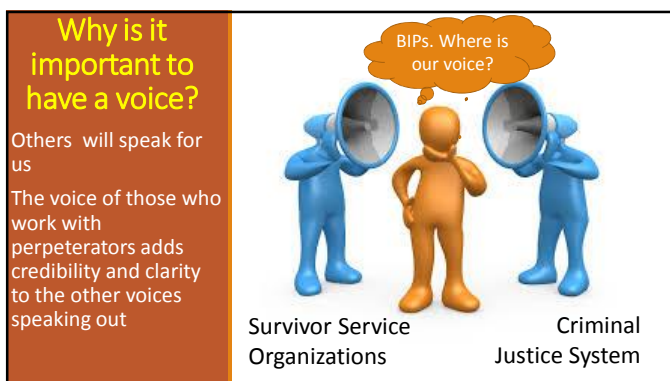
---

---

---

---

---




---

---

---

---

---

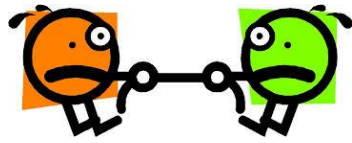
---

---

---

## The Work Ahead

Define the Difference



Gender Informed Gender Neutral

---

---

---

---

---

---

---

---

## The Work Ahead

Advocacy



Educate Pattern  
And a Choice

Laws Resources  
Funds Policies

---

---

---

---

---

---

---

---

## The Work Ahead

Psychology and  
Social Justice



Becoming Allies



Promoting  
Gender  
Informed  
Intervention

---

---

---

---

---


---

---

---

The Work Ahead

Partnership with Research



Promote and Participate in Responsible Research

Accurately Understand Research

---

---

---

---

---

---

---

AQUILA RISING



---

---

---

---

---

---

---

The Time is Now

What You Can Do



---

---

---

---

---

---

---

Can't Commit to Meetings

You can still participate




---

---

---

---

---

---

---

---

Join A Committee

GET A BUTTON!!!



---

---

---

---

---

---

---

---

Contact US

Jeffrie Cape  
[charronservices@gmail.com](mailto:charronservices@gmail.com)  
 248 730-0690

Graham Barnes  
[gbarnes@bwip.org](mailto:gbarnes@bwip.org)  
 612 824-8768 x107

---

---

---

---

---

---

---

---



Next...



---

---

---

---

---

---

---